

Printer maintenance

Printhead maintenance Tips

- ▶ The machine uses special ink. The machine does not print for a long time, so that the ink in the nozzle does not circulate, causing the nozzle to clog.
- ▶ When printer does not print or shut down, the nozzles will run back to the rightmost original point, the cleaning cap system will seal the nozzle, prevents the ink on the nozzle from evaporating in the air and clogs the nozzle.
- ▶ The cleaning cap is an important part of the protection nozzles. If there is ink leakage, the cleaning cap system should be replaced promptly.

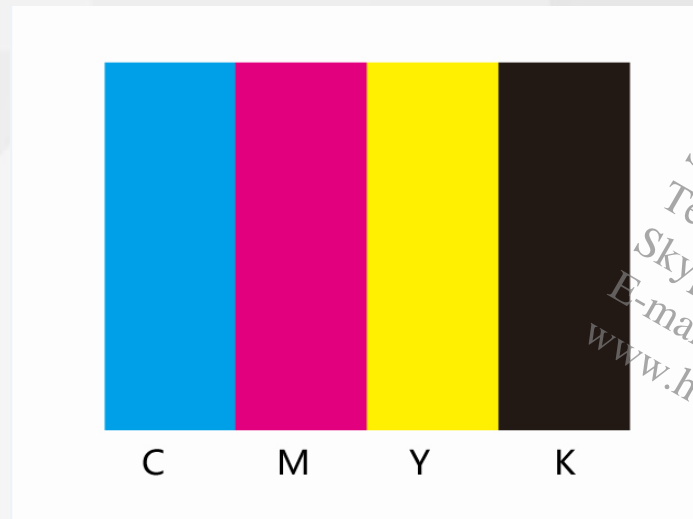
Shandong Honzhan Decoration Engineering Co.,Ltd
Tel/WhatsApp/Viber: 008618660396497
Skype: live:sales_87776
E-mail: sales@honzhanmachines.com
www.honzhanmachines.com

Printer maintenance

Printhead maintenance Daily maintenance

▶ Daily maintenance:

1. If machine add white textile ink,you'd better Pumping white ink out form damper back to ink bottle,so that the nozzle ink circulation.
2. start printer every day, and print the following color blocks, color ink and white ink are all required to print, so that the nozzle ink circulation.
It is best to print at morning and afternoon.



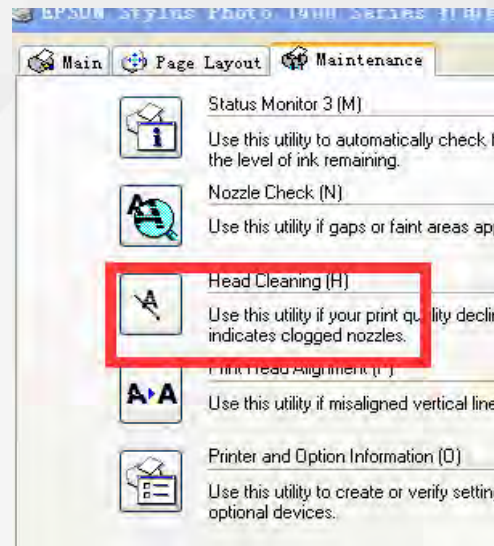
3. Print "Nozzle Check" This is a good way to protect the print head. If you find that the nozzle clogging, should be clear it timely.

Shandong Honzhan Decoration Engineering Co.,Ltd
Tel/WhatsApp/Viber: 008618660396497
Skype: live:sales_87776
E-mail: sales@honzhanmachines.com
www.honzhanmachines.com

Printer maintenance

Printhead maintenance **Maintenance when printing**

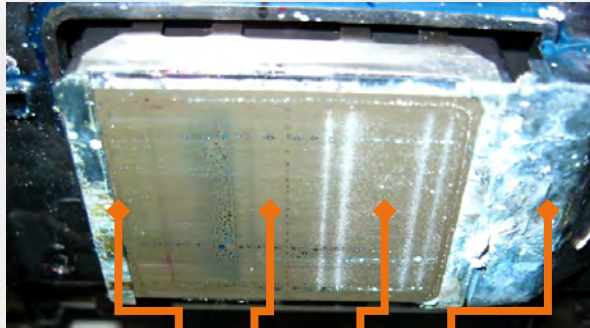
- ▶ Printed objects do not completely absorb UV light, causing UV light to scatter, resulting in ink curing on the surface of the nozzles;
- ▶ Use UV lamp for 1 hour, must clean the nozzle at least once in software
- ▶ If print objects with high surface reflectance, such as mirrors, ceramics, glass, scales, etc., must clean the nozzles by software once time in every half hour.



Shandong Honzhan Decoration Engineering Co., Ltd
Tel/WhatsApp/Viber: 008618660396497
Skype: live:sales_87776
E-mail: sales@honzhanmachines.com
www.honzhanmachines.com

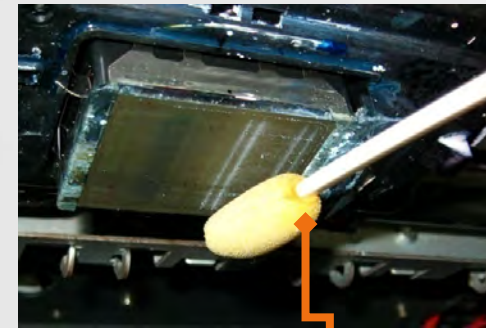
Printer maintenance

Printhead maintenance Maintenance when printing



Dirty surface of nozzles

Cleaning nozzle surface



Special cleaning nozzle cotton swab



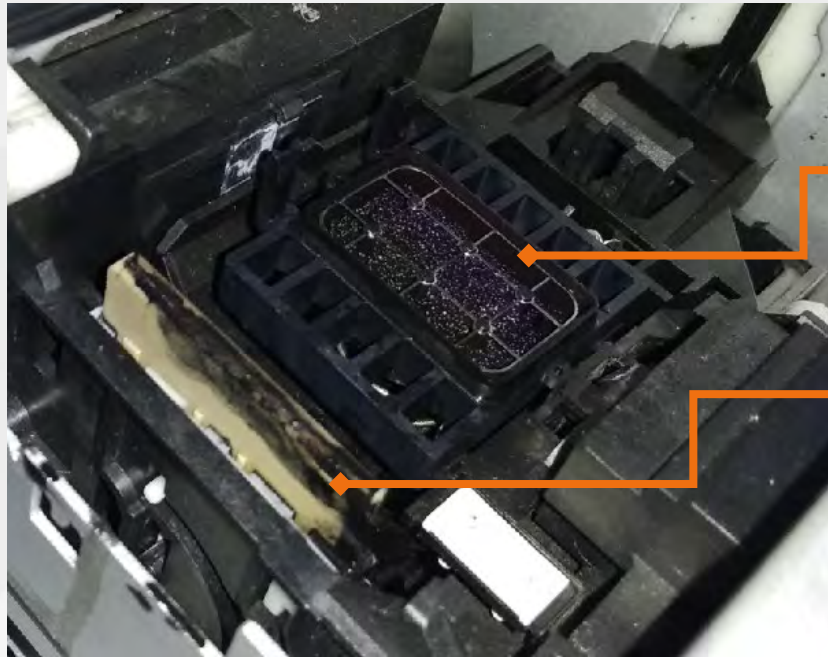
nozzle after cleaning

Shandong Honzhan Decoration Engineering Co.,Ltd
Tel/WhatsApp/Viber: 008618660396497
Skype: live:sales_87776
E-mail: sales@honzhanmachines.com
www.honzhanmachines.com

Printer maintenance Printhead maintenance

▶ After finishing the daily work, Clean cleaning unit

- 1、raise spatula up, Wipe clean with alcohol
- 2、Clean the area around the cleaning unit



→ Ink pad

→ Spatula

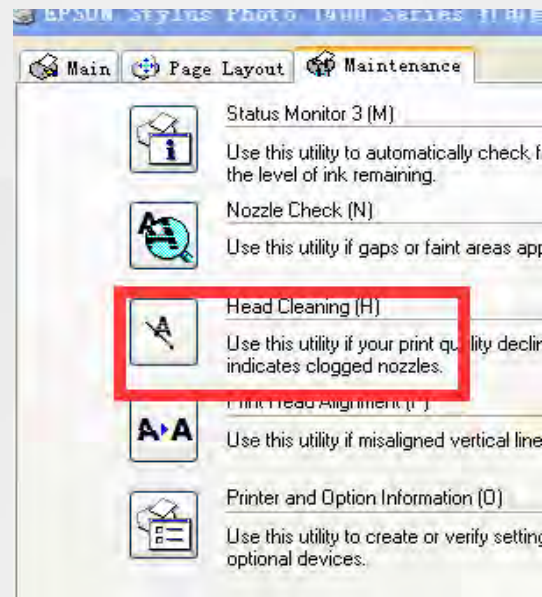
Shandong Honzhan Decoration Engineering Co.,Ltd
Tel/WhatsApp/Viber: 008618660396497
Skype: we:sales_87776
Email: sales@honzhanmachines.com
www.honzhanmachines.com

Printer maintenance

Printhead maintenance **Clogging maintenance**

► Four ways to handle clogged nozzles (according to the degree of nozzle clogging):

Software Cleaning: Click on "Maintenance" in the computer driver, "Print Head Cleaning" in the options.



2. Waste ink: Use a syringe to get out waste ink from the outside pressure



Note: When get out waste ink, cannot let syringe back the water ink.

Printer maintenance

Printhead maintenance **Clogging maintenance**

3, with alcohol / cleaning fluid: press the INK key nozzles out, turn off the power, move the nozzles to the middle, use a syringe to take small amount of alcohol / cleaning liquid inserted in the ink column, draw out the ink, and then use a syringe to take clean alcohol or cleaning fluid to inject into nozzles.



Note: When cleaning, the left hand should hold the hose to prevent it from loosening, and the right hand should not use excessive force to wash the nozzle.
If you have any questions, please see the CD nozzle cleaning video.

Shandong Honzhan Decoration Engineering Co.,Ltd
Tel/WhatsApp/Viber: +8618660096497
Skype: live:sales_87776
E-mail: sales@honzhanmachines.com
www.honzhanmachines.com

Printer maintenance

Printhead maintenance **Clogging maintenance**

4. Soaking nozzle: Soak the surface of the nozzle with a dissolving device equipped with a cleaning solution. Soak the clogging nozzles to be unclog.



Note: After soaking for about one hour, the cleaning nozzle test shall be performed with the cleaning solution, and the nozzle will be soaked for long time. When cleaning the nozzle, if alcohol/cleaning fluid enters the nozzle cable interface, it needs to be blown with a hair dryer and then put on the machine, otherwise it will burn the motherboard.

Shandong Honzhan Decoration Engineering Co.,Ltd
Tel/WhatsApp/Viber: 008618666396497
Skype: live:sales_87776
E-mail: sales@honzhanmachines.com
www.honzhanmachines.com

Printer maintenance

Printhead maintenance

Holiday maintenance

- ▶ If the machine is not used for three days or more, the nozzle protection must be done in advance:
1, remove the nozzle, clean the ink in the nozzle, and apply moisturizing liquid, wrapped in plastic wrap, so that it can be a good protection of the nozzle. After the holiday is over, rinse the moisturizer with alcohol and put it on the machine.

(Note: When adding moisturizing liquid, see small amount of moisturizing droplets from the nozzle, it will be ok.



With moisturizing liquid nozzle

Place paper towel at cable interface

Wrap film

Put paper towel on the nozzle

Nozzle package

2、Pack ink dampers with ink bags



Shandong Honzhan Decoration Engineering Co., Ltd
Tel/WhatsApp/Viber: 008618660396497
Skype: live:sales_87776
E-mail: sales@honzhanmachines.com
www.honzhanmachines.com

Printer maintenance

Printer maintenance

- ▶ Before the machine leaves the factory, there are white lubricating oils on the guide rails. During use, if the guide rails are dirty, there is no need to wipe them. When they are too dirty, only the two ends of the guide rails need to be wiped.
- ▶ The raster data is the positioning basis for the X-axis movement of the machine control nozzles, it is through grating sensor reads the scale value of the grating surface, regular cleaning and maintenance are very important.



Wipe clean with alcohol

Shandong Honzhan Decoration Engineering Co.,Ltd
Tel/WhatsApp/Viber: 008618660396497
Skype: live:sales_87776
E-mail: sales@honzhanmachines.com
www.honzhanmachines.com

Printer maintenance

Printer maintenance

- ▶ The raster disk data is the positioning basis for the machine control Y-axis travel. The data of the grating disk is obtained by reading the scale of the surface of the code disk by the grating disk sensor, so keeping the surface of the grating disk clean is the focus of daily maintenance.



Grating disk



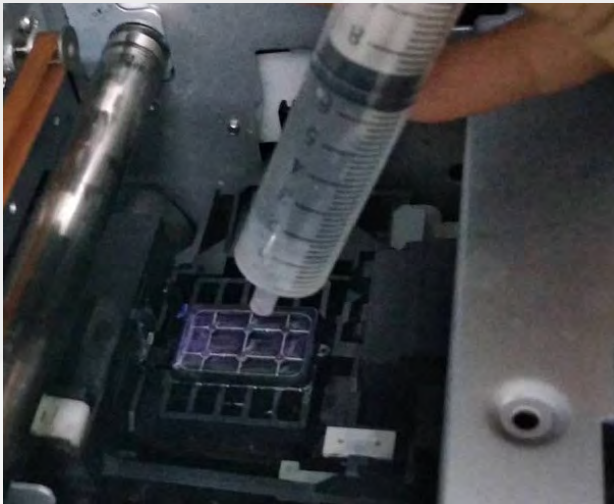
Wipe clean with alcohol

Shenzhen Hanzhan Decoration Engineering Co., Ltd
Tel: 0755-8618660396497
Viber: 87776
Live: sales@honzhanmachines.com
Email: sales@honzhanmachines.com
www.honzhanmachines.com

Printer maintenance

Printer maintenance

- ▶ The cleaning unit is an important part of the nozzle protection, cleaning and refilling. If it does not work for a long time, the waste ink will condense in the cleaning unit.
- ▶ If you do not use the machine for a long time, such as a long holiday, you must do a good job of protecting the cap and cleaning units in advance:
Remove the nozzles, inject it with alcohol/washing liquid onto the ink cap, and withdraw the cleaning liquid under the waste ink tube.
(This action is repeated three or four times.) ; At above the ink cap, moisturize it with moisturizer.



Drip into alcohol



Take out waste ink

Printer maintenance

Printer maintenance

Maintenance item	Time period	Tips:
Nozzle cleaning	Every hour	The nozzle must be cleaned every hour when printing so as not to clog the nozzle.
Working power	Before use everyday	If the operating voltage is not stable, causing the printhead to burn out, a regulator is recommended.
Print color blocks	Daily commuting	Ink circulation is the precondition for the nozzle not to be clogged
Nozzle test print	Before use everyday	The complete test print is a guarantee of good printing
Grating	Before use everyday	It is recommended to use medical alcohol with a purity greater than 95%
Nozzles surface cleaning	Daily commuting	Residual ink or ink is solidified on the surface of the nozzle, causing the nozzle to clog
Nozzles cleaning cap	Daily commuting	There is ink residue on the edge of the nozzle cleaning cap and it will clog the nozzles
Ink Scraper	Daily commuting	
Ink volume	One week	
Waste ink cleared	Half month	Dispose of the waste ink in the waste ink cartridge, and use the random reset software to clear the waste ink.
Printer body cleaning	Half month	Excessive dust and ink residue can cause damage to machine parts

Shandong Honzhan Decoration Engineering Co., Ltd
 Tel/WhatsApp/Viber: 008615060396497
 Skype: live:sales_87775
 E-mail: sales@honzhanmachines.com
 www.honzhanmachines.com